

## Fortech OPTcompact: The compact terminal for EV recharging

**When dealing with EV charging stations, it could be really important to focus on the dimensions of the payment terminal. Saving space and money could easily help a lot of businesses that are entering this market or that are interested in offering the service of electric recharge to customers or employees. Increasingly, in fact, EV recharge stations are being installed in the hotel car parks, shopping and residential apartment blocks, limited spaces that require advanced technology but small dimensions.**

For this reason, Fortech has designed and developed OPTcompact, the innovative compact terminal, only slightly larger than a smartphone, for managing electric vehicles recharging and car parking.



© Fortech

### **Minimal expense, maximum yield!**

The terminal, Android based, is equipped with a QR SCANNER for reading QR codes and promotional vouchers, has a voice guidance system in 5 languages and an extremely intuitive user interface.

### **Easy recharge without login**

Equipped with a magnetic stripe, chip and contactless reader, OPTcompactl enables all different cashless payments (Apple and Google Pay included), without any user registration on apps and web portals.



### **Different set ups**

OPTcompact allows to manage wallboxes and poles, DC or AC. The device can be installed embedded on the recharge point, wall mounted or on its dedicated stand.



### **Digital receipt or invoice**

OPTcompact is set to send a receipt or electronic invoice to be delivered by SMS directly to the smartphone.

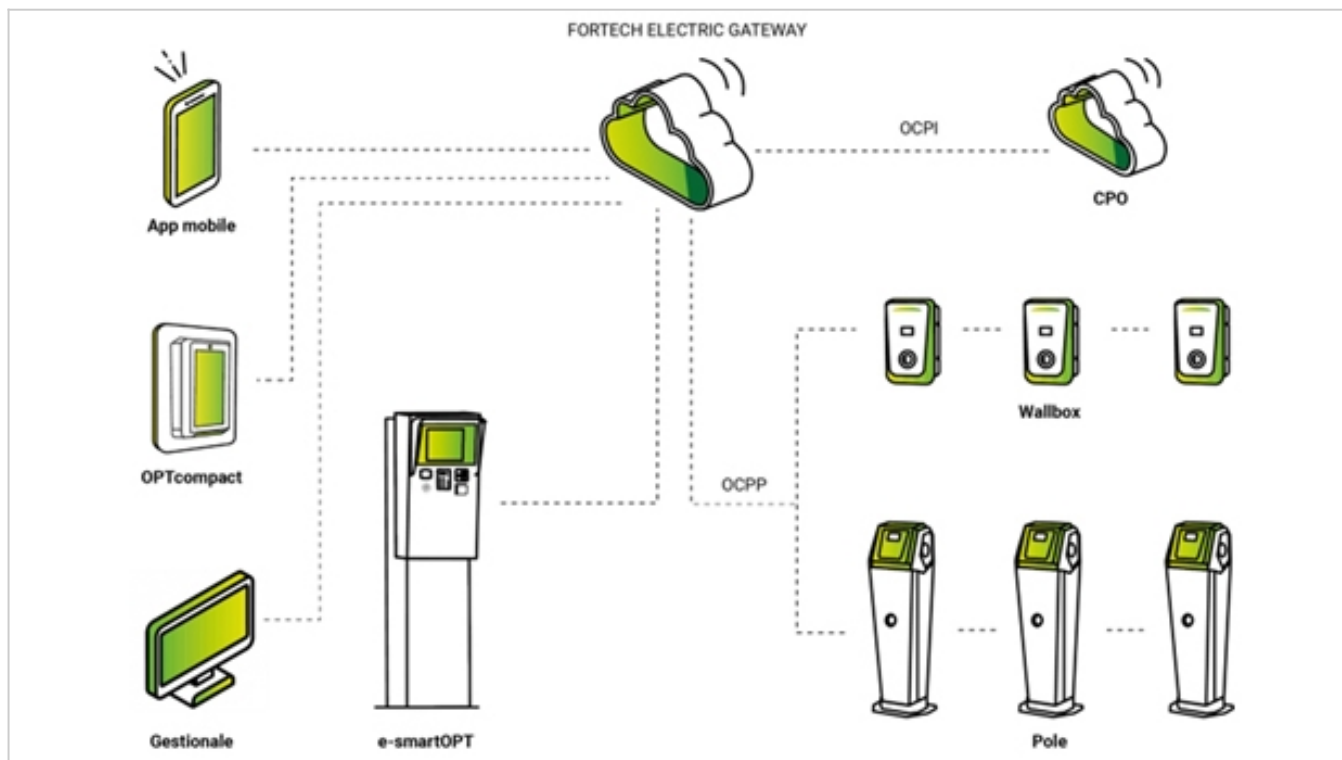
### **Fully end-to-end infrastructure**

OPTcompact is part of e4self, a highly flexible infrastructure, allowing payments with a mobile app customized for your own service station or for a sites network, unlocking of recharge stations from a web platform and payments from an outdoor terminal with credit and debit cards, without any user registration.

The Fortech Electric Gateway (FEG) manages the entire infrastructure of the EV recharge areas, from

the wallbox to the outdoor payment terminal, from the mobile app to the issuing of electronic invoices.

The FEG is open to all the CPO (Charge Point Operator) and e-MSP through OCPI protocol, allowing freedom integration with third-party systems.




>> **Check out the Fortech website and get in touch directly** to learn more about our smart solutions for the industry.

## Contact information



**FORTECH SRL**  
Via Rigoletto 4  
47922 Rimini  
Italy

 +39 0541364611

 [www.fortech.it](http://www.fortech.it)